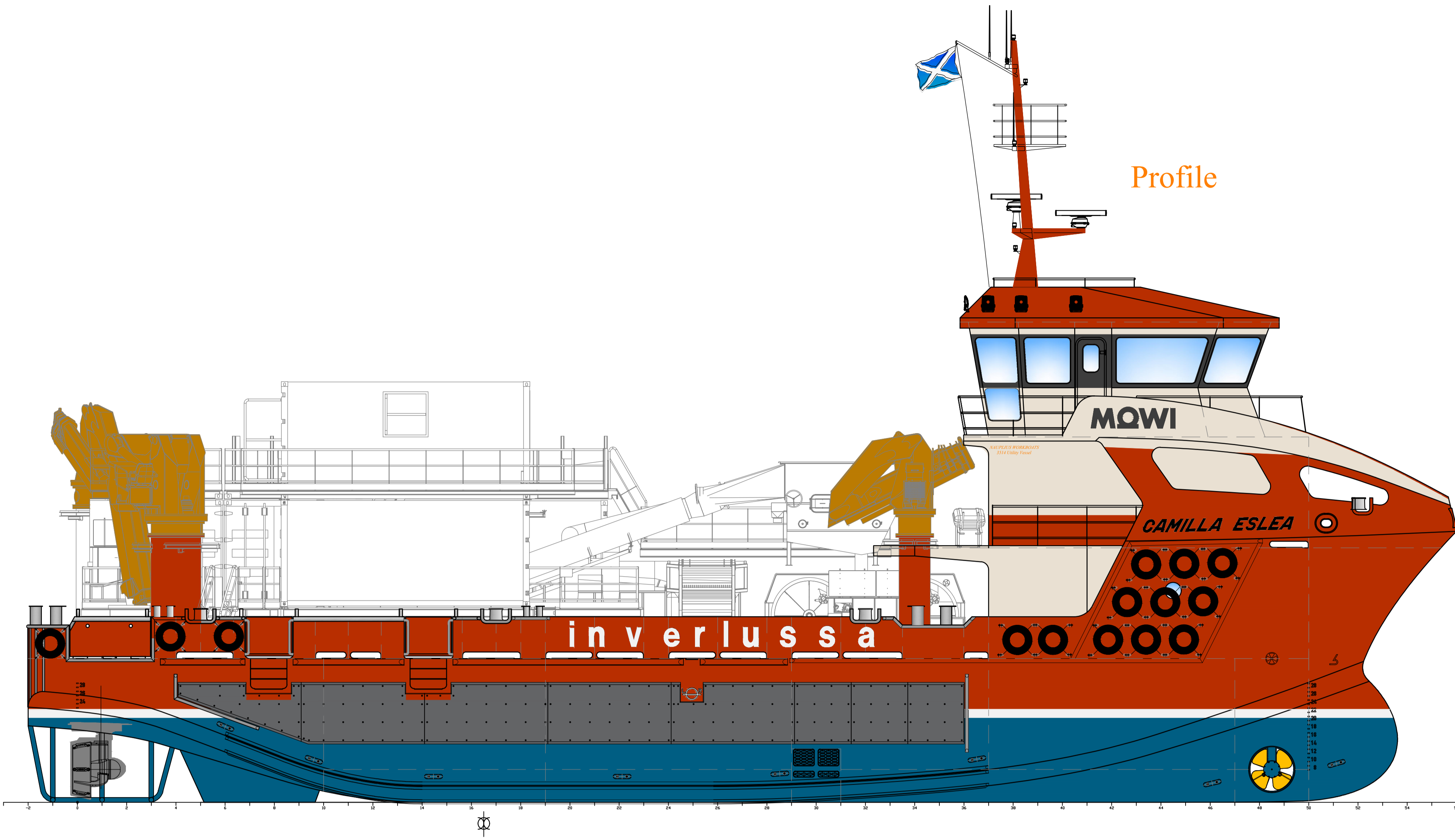


3514 UTILITY VESSEL "De-Licing Vessel"

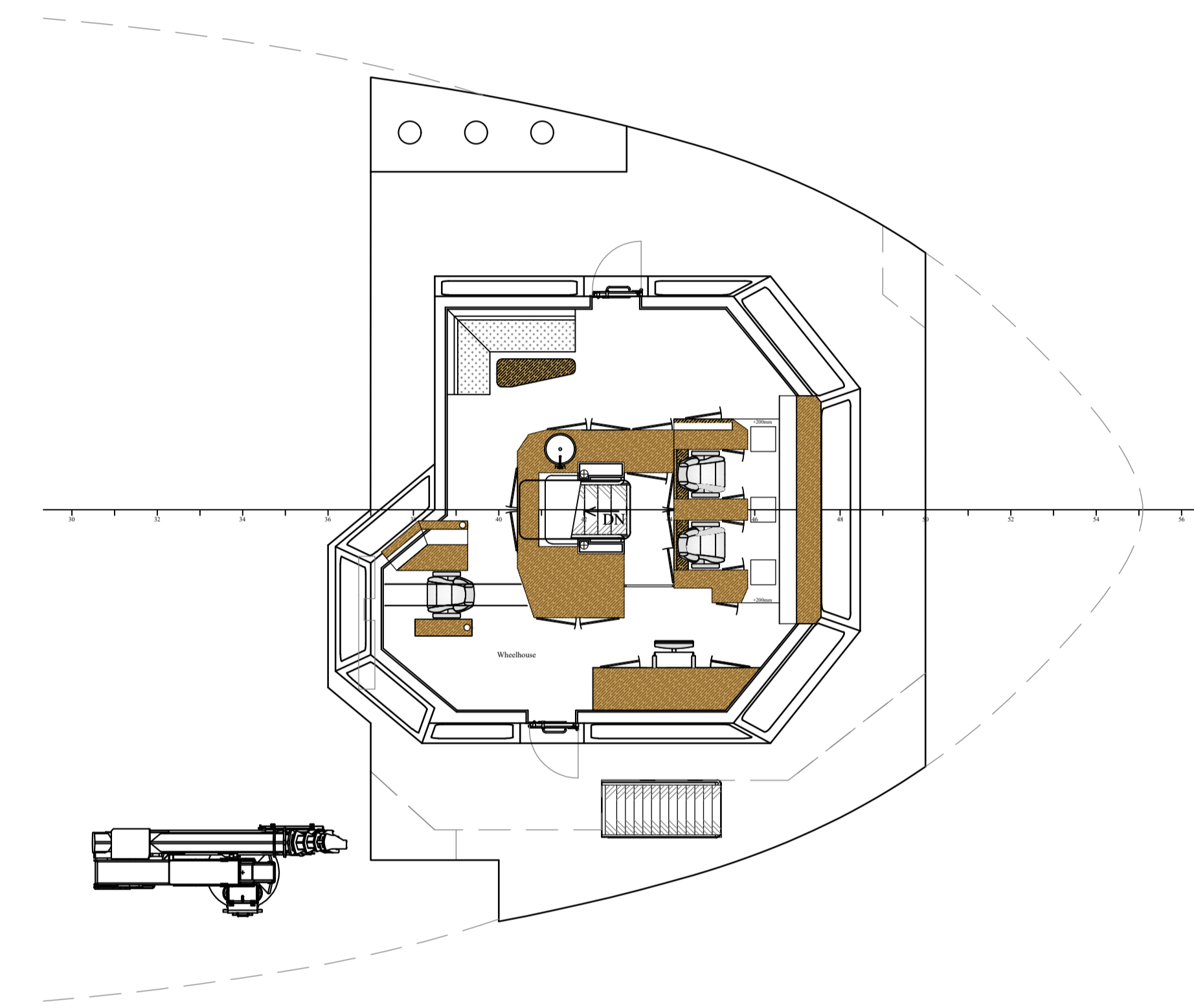
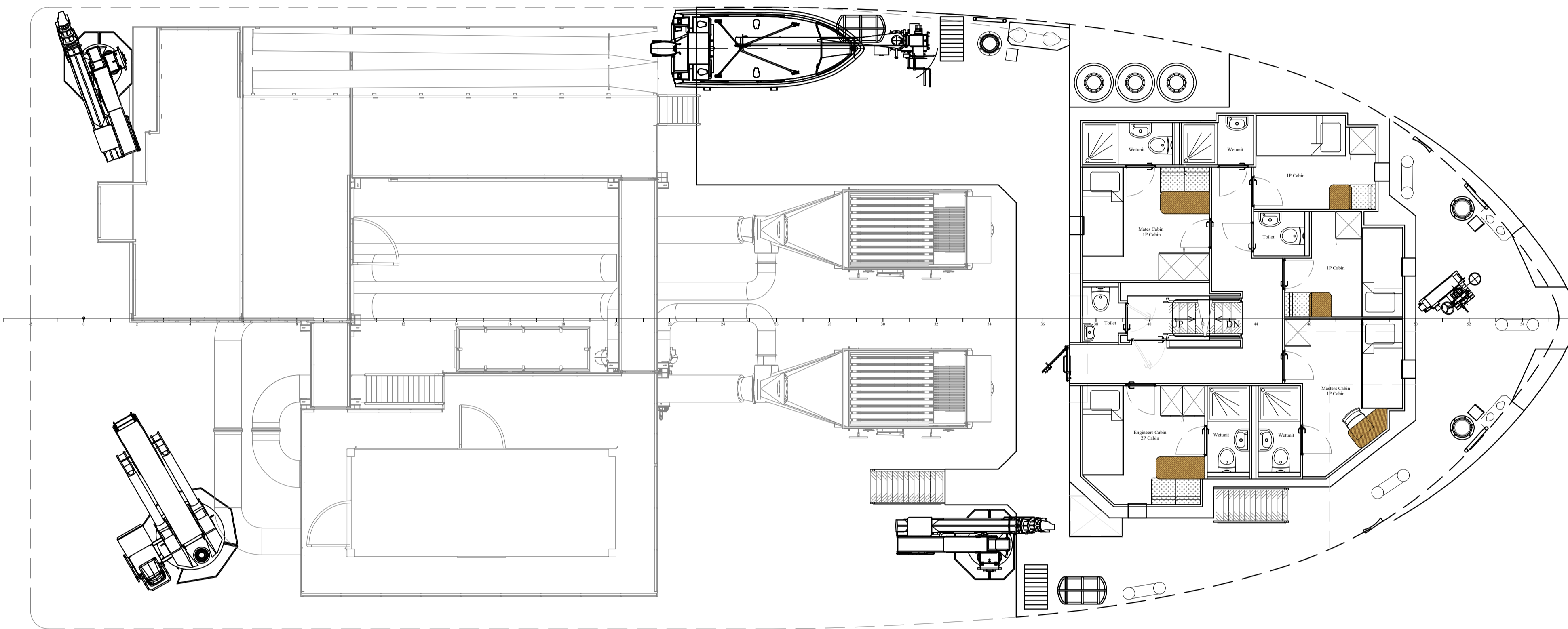
Profile



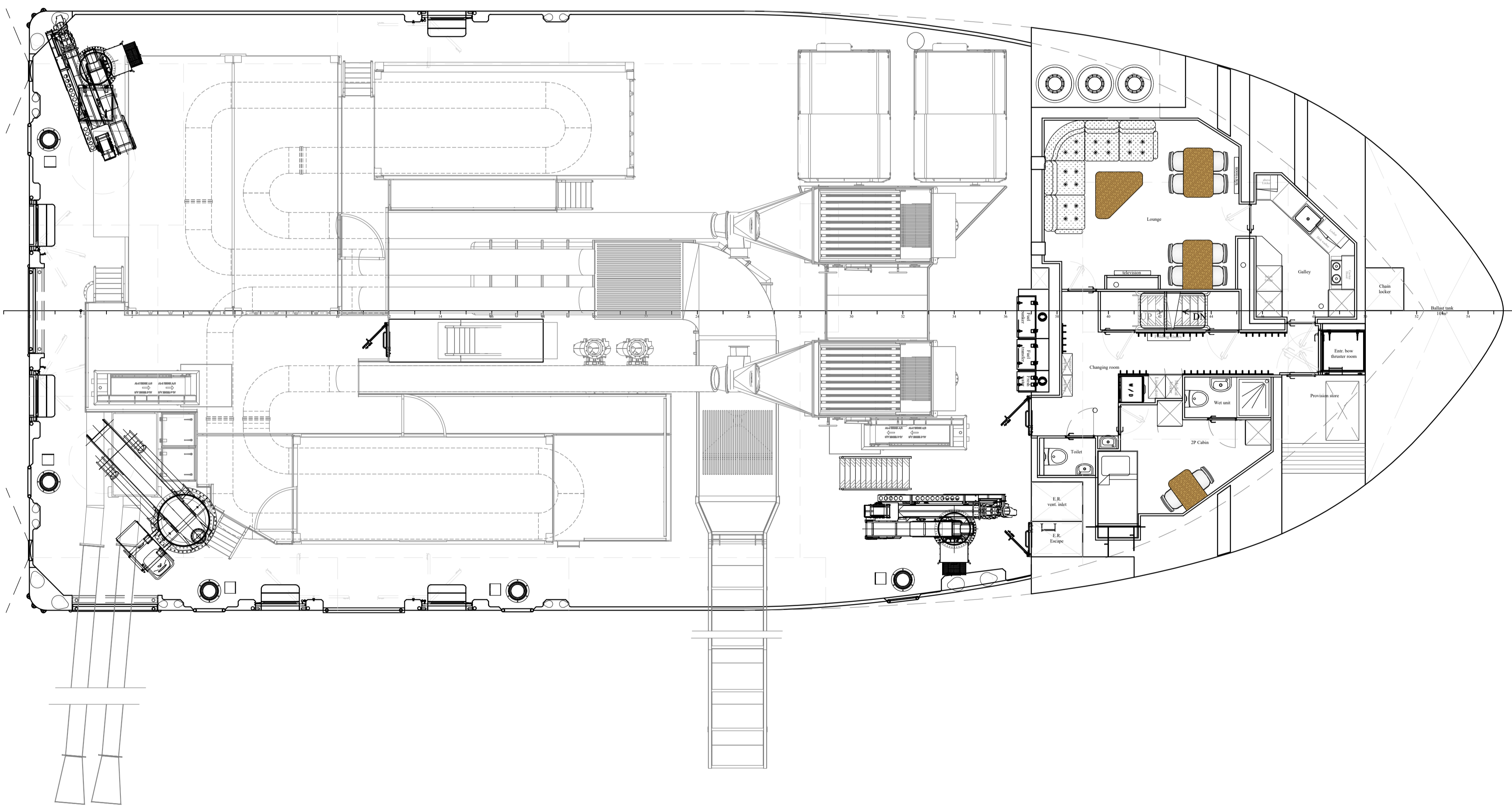
Second level maindeck

Forecastle deck

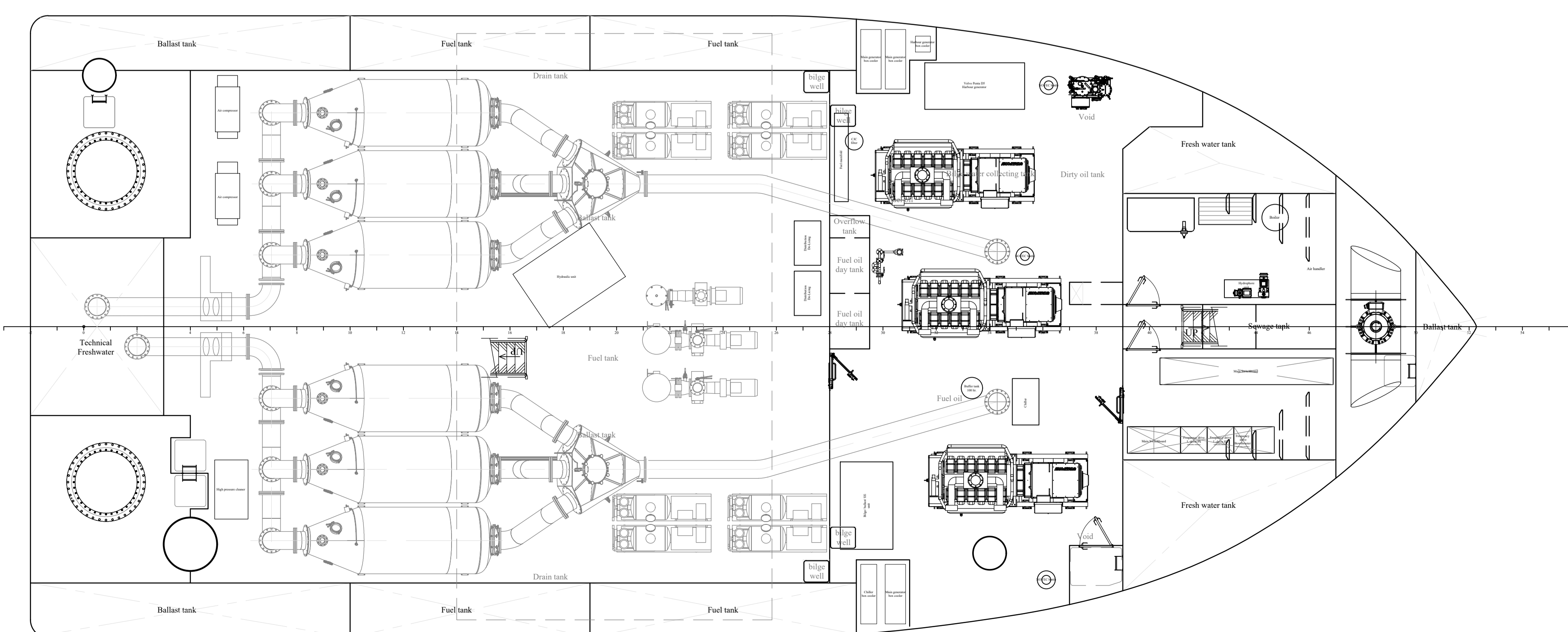
Wheelhouse



Maindeck



Tanktop



MAIN PARTICULARS:

<i>Dimensions:</i>		
Length overall	max. : 34,99	meter
Length hull	abt. : 34,95	meter
Breadth overall	abt. : 14,30	meter
Breadth hull	abt. : 14,00	meter
Depth	abt. : 3,50	meter
Draft	abt. : 2,65	meter
Gross Tonnage	abt. : <500	GT
Air draft	abt. : 15,00	meter

Classification	: Lloyds Register London : #100 A1 SCC Workboat Mono G3 : MCH
National Authority	: United Kingdom / Scotland
Radio Area	: GMDSS A2

Auxiliary equipment

Thrusters	1x : Veth Propulsion VT 320 : 335 kW
Deck cranes	1x : HS Marine : AKC 145 / 23.5 HE5 : 2400 kg @ 23,50 meter 2x : HS Marine : AK 48 / 18.5 E5 : 1100 kg @ 18,55 meter
Capstan	7x : Tenford Industry : N300-7000 : Hydraulic driven

Propulsion:

Main generator	3x : Mitsubishi S12A2 (Z3) MPTAW : 709 kW @ 1500 rpm : 677 kW @ 400V - 50 Hz
Harbour generator	1x : Volvo Penta : D5A-T : 70 kW @ 50 Hz
Main Propulsion	2x : VETH L-Drive : VL-400si : 500 kW

Capacities:

Ballast water	abt. : 150	m ³
Fuel oil bunker	abt. : 128	m ³
Fresh water	abt. : 30	m ³
Technical water	abt. : 20	m ³
Sewage water	abt. : 10	m ³

NAUPLIUS
WORKBOATS

inverlussa
MARINE SERVICES

ARGOS ENGINEERING
Aanhoeve 2-9
9723 JJ Groningen
The Netherlands
Phone: +31 (0)50 - 577 00 64
Fax: +31 (0)50 - 577 10 05
E-mail: info@argos-engineering.nl

1	13-07-20	Project update
2	14-07-20	Project update
3	15-07-20	Project update
4	16-07-20	Project update
5	17-07-20	Project update
6	18-07-20	Project update
7	19-07-20	Project update
8	20-07-20	Project update
9	21-07-20	Project update
10	22-07-20	Project update
11	23-07-20	Project update
12	24-07-20	Project update
13	25-07-20	Project update
14	26-07-20	Project update
15	27-07-20	Project update
16	28-07-20	Project update
17	29-07-20	Project update
18	30-07-20	Project update
19	31-07-20	Project update
20	01-08-20	Project update
21	02-08-20	Project update
22	03-08-20	Project update
23	04-08-20	Project update
24	05-08-20	Project update
25	06-08-20	Project update
26	07-08-20	Project update
27	08-08-20	Project update
28	09-08-20	Project update
29	10-08-20	Project update
30	11-08-20	Project update
31	12-08-20	Project update
32	13-08-20	Project update
33	14-08-20	Project update
34	15-08-20	Project update
35	16-08-20	Project update
36	17-08-20	Project update
37	18-08-20	Project update
38	19-08-20	Project update
39	20-08-20	Project update
40	21-08-20	Project update
41	22-08-20	Project update
42	23-08-20	Project update
43	24-08-20	Project update
44	25-08-20	Project update
45	26-08-20	Project update
46	27-08-20	Project update
47	28-08-20	Project update
48	29-08-20	Project update
49	30-08-20	Project update
50	31-08-20	Project update
51	01-09-20	Project update
52	02-09-20	Project update
53	03-09-20	Project update
54	04-09-20	Project update
55	05-09-20	Project update
56	06-09-20	Project update
57	07-09-20	Project update
58	08-09-20	Project update
59	09-09-20	Project update
60	10-09-20	Project update
61	11-09-20	Project update
62	12-09-20	Project update
63	13-09-20	Project update
64	14-09-20	Project update
65	15-09-20	Project update
66	16-09-20	Project update
67	17-09-20	Project update
68	18-09-20	Project update
69	19-09-20	Project update
70	20-09-20	Project update
71	21-09-20	Project update
72	22-09-20	Project update
73	23-09-20	Project update
74	24-09-20	Project update
75	25-09-20	Project update
76	26-09-20	Project update
77	27-09-20	Project update
78	28-09-20	Project update
79	29-09-20	Project update
80	30-09-20	Project update
81	01-10-20	Project update
82	02-10-20	Project update
83	03-10-20	Project update
84	04-10-20	Project update
85	05-10-20	Project update
86	06-10-20	Project update
87	07-10-20	Project update
88	08-10-20	Project update
89	09-10-20	Project update
90	10-10-20	Project update
91	11-10-20	Project update
92	12-10-20	Project update
93	13-10-20	Project update
94	14-10-20	Project update
95	15-10-20	Project update
96	16-10-20	Project update
97	17-10-20	Project update
98	18-10-20	Project update
99	19-10-20	Project update
100	20-10-20	Project update

DRAWING DESCRIPTION: GENERAL ARRANGEMENT

DATE: 20-07-2020
DRAWING NUMBER: 021-00-000-01 / F
SCALE: 1:70